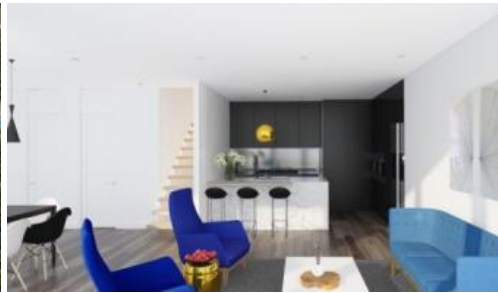


Sold



8 Ketu Court, Albany



STAND OUT OF THE CROWD

Urban Eden neighbourhood has been clearly designed to incorporate the nature of Urban living in a bold and bright concept.

Proposed building plan - Building type E2 which contains 2 Storeys, 3 Bedrooms and 2 Carparks. Land area of 216m² with building area 153m².

Affordable, Master builder guarantee, FREEHOLD titles and NO body corporate FEES. Possible weekly rental \$800 - \$880pw.

Urban Eden neighbourhood has been clearly designed to incorporate the nature of Urban living in a bold and bright concept.

The fantastic new neighbourhood to great childcare, college and university. Albany shopping and leisure centre a short walking distance, access local community sports, leisure centre, tennis

 3  3  2  216 m²

Price	SOLD
Property Type	Residential
Property ID	96
Land Area	216 m ²

Agent Details

Matty Ma - +64 21 287 4278

Eric Rong - +64 21 988 838

Office Details

Mars Realty
Suite 3 227A Dairy Flat
Highway Albany, Auckland City,
AUK, 0632 New Zealand
09 448 5299



clubs and activity parks.

This is a FIRST to cater to the growing demands of buyers and help them achieve their dreams - Choose from the variety including home and land packages, land only packages, new built homes, and rent to buy options within 18 months available.

Construction started, Type E2, 4 Bedrooms.

New funding approved for a new link road between Gills Road and Oteha Valley Road, with estimated start in December this year and improvements to cycleways, walkways, and playgrounds will benefit the central convenience on your property.

Details of the new link road can be found here:

<https://at.govt.nz/projects-roadworks/albany-developments/medallion-drive-link/>

Moving in to enjoy the Xmas!

Call Matty Ma on 021 287 4278 from Mars Realty for your chance to own.

The above information provided has been furnished to us by the vendor/s. We have not verified whether or not that information is accurate and do not have any belief in one way or the other in its accuracy. We do not accept any responsibility to any person for its accuracy and do no more than pass it on. All interested parties should make and rely upon their own inquiries in order to determine whether or not this information is in fact accurate.