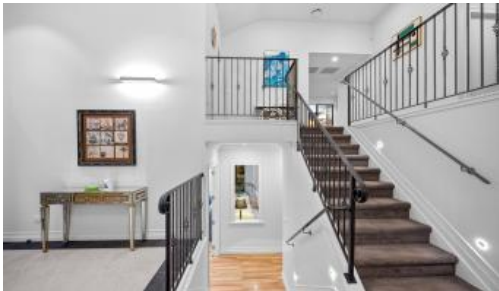




5 Kingfisher Road, Millwater



# Price Drop! MILLWATER: Luxury & Practicality

Nestled on an open corner section 656m2 (more or less), this remarkable property boasts exceptional craftsmanship and thoughtful design touches. Crafted and lived in by the developer owner, it offers a level of luxury and comfort that surpasses your standard Millwater build.

With great internal flow, and thoughtful design to maximize space over 346m2 approx, this home is a must-see! Features include high-quality fit-out, extra lighting, open-plan living, and detailed finishing throughout. It encompasses 5 bedrooms, 3 bathrooms, 2 single toilets, 2 laundries, a kitchen with a scullery, and scenic views of Wainui Hills.

Schools in proximity include Orewa College (2.7km), Silverdale School (1.1km), and Kingsway (1.4km). Conveniently located just

 5  3  2  656 m2

Price	\$1,859,000
Property Type	Residential
Property ID	596
Land Area	656 m2
Floor Area	346 m2

## Inspection Times

- Sat 25 May, 12:00 PM - 12:45 PM
- Sun 26 May, 12:00 PM - 12:45 PM

## Agent Details

Eric Rong - +64 21 988 838  
Nik Butler - 022 460 5080

## Office Details

minutes from the motorway and Silverdale shopping center, with easy access to Albany and Orewa approximately 10mins

The granny flat features a private deck and elderly-friendly bathroom additions, including a high toilet, safety bars, and a temperature-controlled shower.

Don't miss out on the opportunity to own this excellent property! Open homes are advertised or call for your private viewing.

Eric Rong  
021 988 838  
easyijie88@gmail.com

Nik Butler  
022 460 5080  
nik.butler@marsrealty.co.nz

The above information provided has been furnished to us by the vendor/s. We have not verified whether or not that information is accurate and do not have any belief in one way or the other in its accuracy. We do not accept any responsibility to any person for its accuracy and do no more than pass it on. All interested parties should make and rely upon their own inquiries in order to determine whether or not this information is in fact accurate.

Mars Realty  
Suite 3 227A Dairy Flat  
Highway Albany, Auckland City,  
AUK, 0632 New Zealand  
09 448 5299

