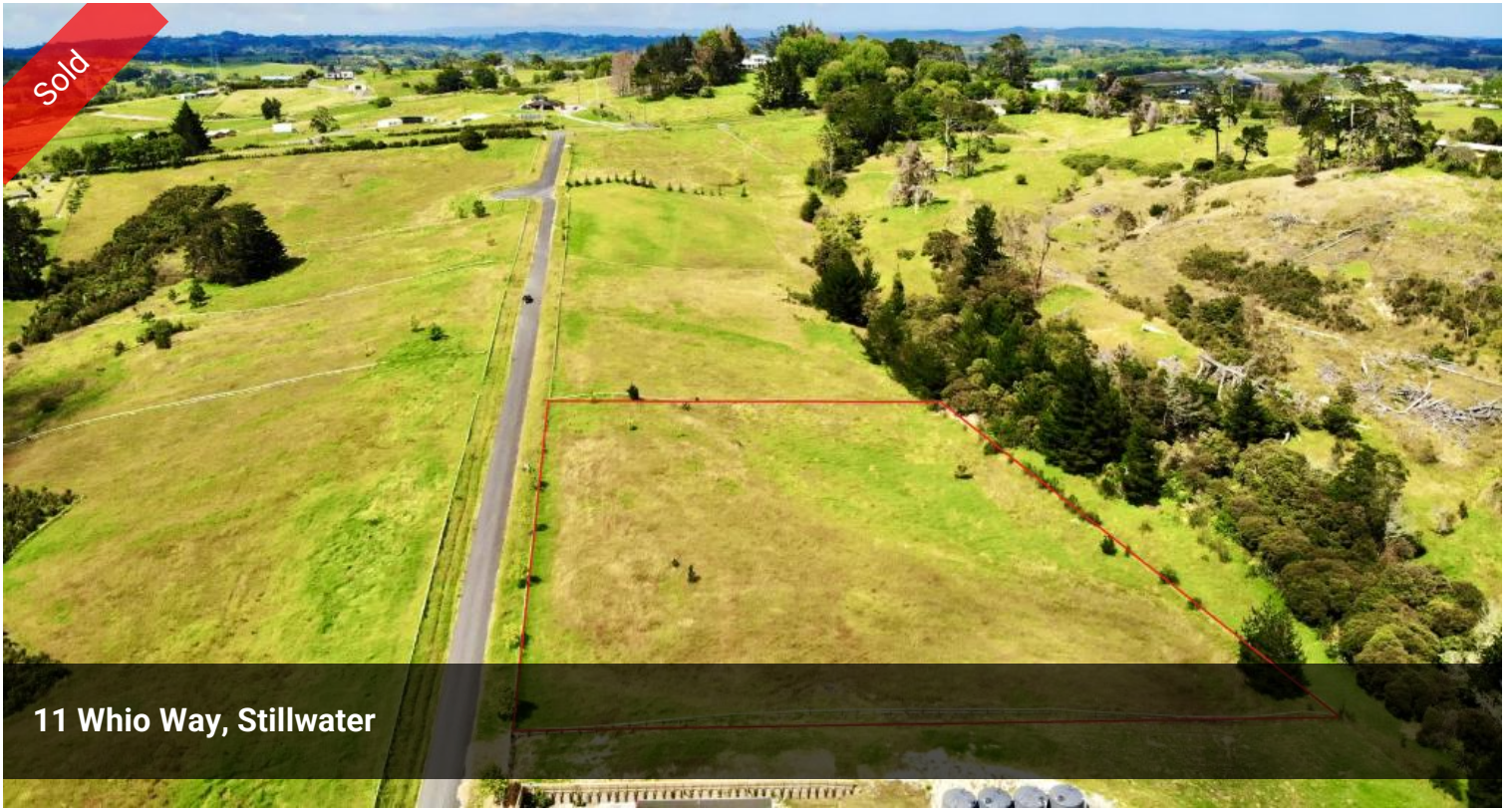


Sold



11 Whio Way, Stillwater



## Prime Lifestyle Section

Looking for the perfect place to build your family's dream home? Look no further than this prime land opportunity! With 10,000 sqm of gently contoured land and stunning rural views, you'll love the picturesque setting.

This land is located in the highly sought-after development of Whio Way, just off East Coast Road. You'll enjoy easy access to Silverdale Shopping facilities and the upcoming Penlink motorway ramps, projected to be completed in 2026 (as per Waka Kotahi's recent news release).

Don't miss your chance to make your dreams a reality - contact us today to schedule a viewing!

The above information provided has been furnished to us by the vendor/s. We have not verified whether or not that information is accurate and do not have any belief in one way or the other in its accuracy. We do not accept any responsibility to any person for its accuracy and do no more than pass it on. All interested parties should make and rely upon their own inquiries in order to determine

📏 10,000 m<sup>2</sup>

<b>Price</b>	SOLD
<b>Property Type</b>	Residential
<b>Property ID</b>	590
<b>Land Area</b>	10,000 m <sup>2</sup>

### Agent Details

Shawn Ma - +64 21 217 8211

### Office Details

Mars Realty  
Suite 3 227A Dairy Flat  
Highway Albany, Auckland City,  
AUK, 0632 New Zealand  
09 448 5299



whether or not this information is in fact accurate.