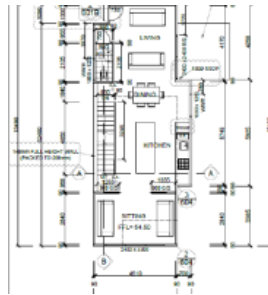
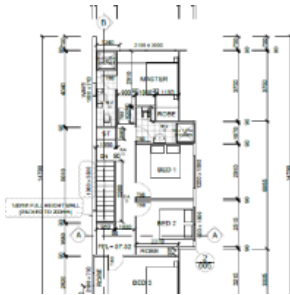
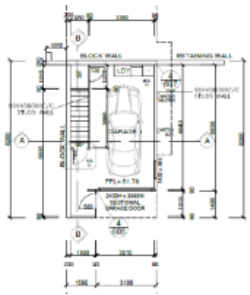


Sold



3 Waihou Crescent, Albany



## STAND OUT OF THE CROWD

Affordable, Master builder guarantee, FREEHOLD titles and NO body corporate FEES. Possible weekly rental \$800 - \$880pw.

Urban Eden neighbourhood has been clearly designed to incorporate the nature of Urban living in a bold and bright concept.

The fantastic new neighbourhood to great childcare, college and university. Albany shopping and leisure centre a short walking distance, access local community sports, leisure centre, tennis clubs and activity parks.

Expected Completion Date 2022/1/31

New funding approved for a new link road between Gills Road and Oteha Valley Road, with estimated start in December this year and improvements to cycleways, walkways, and playgrounds will

🚗 4 🚿 3 🚗 1 📏 185 m<sup>2</sup>

<b>Price</b>	SOLD
<b>Property Type</b>	Residential
<b>Property ID</b>	197
<b>Land Area</b>	185 m <sup>2</sup>

### Agent Details

Matty Ma - +64 21 287 4278

### Office Details

Mars Realty  
 Suite 3 227A Dairy Flat  
 Highway Albany, Auckland City,  
 AUK, 0632 New Zealand  
 09 448 5299



benefit the central convenience on your property.

Details of the new link road can be found here:

<https://at.govt.nz/projects-roadworks/albany-developments/medallion-drive-link/>

Moving in to enjoy the Xmas!

Call Matty Ma on 021 287 4278 from Mars Realty for your chance to own.

The above information provided has been furnished to us by the vendor/s. We have not verified whether or not that information is accurate and do not have any belief in one way or the other in its accuracy. We do not accept any responsibility to any person for its accuracy and do no more than pass it on. All interested parties should make and rely upon their own inquiries in order to determine whether or not this information is in fact accurate.